

FREE

just

ISSUE 120

BEVERLEY

IT'S YOUR MAGAZINE

10

TEN YEARS ON - JUST BEVERLEY

NEWS, WHAT'S ON, LIFESTYLE, FEATURES, PUZZLES, PHOTOS & MORE

Wishing you a
Healthy and Prosperous 2025



Improve business performance -
outsource your payroll

Payroll Outsourcing Benefits

- ✓ Cost reduction
- ✓ Better staff productivity
- ✓ High accuracy & reliability
- ✓ e-payslips direct to employees via our app
- ✓ A named personal contact
- ✓ Added value services including HR & Benefits in Kind
- ✓ Useful online information

to arrange a **FREE** meeting
call us on: 0845 308 2288
or visit
www.stipendia.org.uk



Stipendia Payroll Solutions



@StipendiaPay

7 BEVERLEY RACECOURSE PHOTO EXHIBITION



4 MAYOR OF BEVERLEY



18 BROOK TAVERNER



23 BARKING BUBBLES



28 LEON INSPIRES



32 WHAT'S BEHIND PARKRUN



34 PQA RETURNS



Contributors:

Julian Minshall, Olivia Peace, Rich Manville, James Aconley, Malcolm Anderson, Lynne Auton, Louise Barrett, Jo Bridgeman, Andrew Cooper, Shane Cooper, Julie Dowding, Fran Dunning, Josh Harrison, Mayor of Beverley, Amanda McConnell, Navigation Wealth Management, Jayne Morgan, Lewis Northen, Colin Raynor, Ian Richardson, Chris Wade, Lee Wardell, Nathan Wilson. Front Cover Image Credit - Jamie Newson-Smith of FlightSight

REMEMBER! If you see examples of anti-social behaviour or other types of low-level crime, do report it to the appropriate authorities. **POLICE - Emergency 999, Non-urgent 101. ANTI-SOCIAL BEHAVIOUR (East Riding of Yorkshire Council) - 01482 393939.** The magazine is available from outlets in Beverley and surrounding areas.

Disclaimer - All the information provided was correct at the time of going to print. ISSN 2754-9216



Please pass your Just Beverley on or recycle it responsibly. Printed by: Jadan Press.

JANUARY LETTER FROM THE EDITORS



Happy New Year and may 2025 bring you continued health and happiness. We are delighted to be celebrating our 10th Anniversary of Just Beverley, reflecting this in the publication.

Every New Year we usually start with making some resolutions. This year, why not make a change to a resolution, make a PLAN!! If we plan we can make it happen and monitor our success, with success is a reward. Surround yourself with people who support you.

Have a great January and all the best for a great 2025. We look forward to the next 10 years.

Julian.



Happy January readers!

While I wasn't involved with the first issue, 10 years is a great achievement for what we maintain as a positive publication, putting smiles on peoples faces, educating and celebrating achievement. As we start a New Year, I, like most people, will set some plans, (resolutions), this year, with plans in place I will monitor and succeed, I love chocolate! "Rewards for my efforts".

What are your goals? I'm so excited for 2025, again another exciting calendar of sporting activity ahead, festivals and holidays to plan, there's so much happening. As always, stay safe and enjoy our 120th Issue - 10th Anniversary.

Olivia.



GET IN TOUCH WITH US:

Website: justbeverley.co.uk

Email: info@justbeverley.co.uk

Telephone: 01482 679947

Facebook: [facebook.com/justbeverley](https://www.facebook.com/justbeverley)

If you would like copies for your business to distribute to staff and customers, call Just Beverley on 01482 679947.

STIPENDIA TAKES TIME TO REFLECT

Stipendia proudly sits in the heart of Beverley with offices in Swabys Yard. Since their incorporation 11 years ago, Stipendia has proudly supported the businesses from Beverley whilst also servicing clients and delivering tailored solutions nationwide for small, medium and corporate companies.

Lynne commented, "From humble beginnings, we've grown alongside the town's vibrant business community, becoming a trusted partner in navigating the complexities of payroll management. We've streamlined processes, ensuring compliance and saving valuable time increased our team as and when required, to meet the changing needs of businesses.



"Larger organisations have relied on our expertise to handle intricate payroll systems with accuracy and efficiency. During the Covid times understanding and managing all the furlough intricacies".

Lynne Auton, Stipendia MD, has played an active role in the community, joining local network groups BRBN and Beverley Chamber of Trade helping them grow and flourish, along with supporting local charities and good causes.

Lynne said, "Balancing time between business, family and hobbies, whilst also being part of the community over the last decade plus has also given back so many positives".

Lynne went on to say, "Having moved house twice, celebrated my 20th wedding anniversary, my son's 18th birthday, and supported him through a local football grass roots network, my son is now pursuing a career as a football professional. We have driven thousands of miles around the country to support him and are proud to say watching him make his league 2 goalkeeping debut at the age of 17, makes it all worthwhile".

Lynne in her spare time is committed to her pastime, 'weight lifting', having competed in Olympic weightlifting and achieving British



champion and European bronze medalist status. Stipendia, through their dedication to detail, can reflect on this decade of community partnership and growth with pride, while not forgetting where they started.

Lynne commented, "We are pleased to work with Just Beverley since it started 10 years ago, we have seen the publication flourish, we have a good relationship with Julian and we work well together promoting each other's businesses. From us all at Stipendia we wish the team at Just Beverley a very happy 10th anniversary".

NEW YEAR MESSAGE FROM THE MAYOR OF BEVERLEY

When a New Year dawns, thoughts turn to fresh hopes, new dreams and grasping opportunities with both hands. We consider ways to build a brighter future for ourselves, our families and our community.

As Just Beverley turns ten years old this year, I would like to take a moment to reflect on the positive changes in our town in that time. Beverley Town Football Club played in the FA Cup for the first time in over a century and are now playing in the NCEL Premier League achieving good home attendances at matches and have plans to expand in the future.

Investment into Beverley Braves Rugby League Club at Thurlow Avenue playing field with a club facility which has attracted lots of children into the sport of rugby league instilling in them a sense of belonging, pride and camaraderie, whilst improving their health and fitness.

Flemingate Shopping Centre opened ten years ago in November 2015. Some people had concerns that it would be a "white elephant", however over the ten years it has transformed the old industrial complex and vacant and sadly missed Army Transport Museum into a vibrant area of the town, working well with the traditional town centre market place.



I would like to thank Julian and his team for covering Beverley news and history over these past ten years and would like to wish Just Beverley a happy tenth birthday with many more to come!

We would also like to wish Beverley and all of its residents a happy and prosperous 2025.

**Dave Boynton & Tina Wilson-Adams
Mayor and Mayoress of Beverley**

FLEMINGATE AND EAST YORKSHIRE FOODBANK SPREAD HOLIDAY CHEER WITH SANTA'S MINI GROTTO

This December, Flemingate Shopping Centre partnered with East Yorkshire Foodbank to bring joy to children and make a real difference to the community with a heartwarming initiative: Santa's Mini Grotto.

Rather than paying for the opportunity to meet Santa, families were invited to bring non-perishable food donations to support the local foodbank. The children placed their contributions into Santa's helpers' trolleys as they visited the man in red, spreading holiday cheer while helping those in need.

Jo Bridgeman, Flemingate's Marketing and Events Manager, shared her delight at the event's success. "It was such a lovely atmosphere. Parents and carers really seemed to value the event," she said. "Visiting Santa can be expensive, and this was a great way to offer a special experience to families with younger children, especially while older kids were at school. It was heartwarming to hear little ones talking about how they brought food to help someone else. Our youngest visitor was just 3 weeks old!"



The generosity didn't stop there - many visitors who didn't have young children also contributed food donations. Local businesses and shops at Flemingate showed their support, joining in to make a real impact.

Mandy Thomlinson, Project Manager at East Yorkshire Foodbank, expressed her gratitude, saying, "We are so grateful for all the donations we received from the public and businesses at Flemingate. Over the two days, we collected more than 40 crates of food, which will make a huge difference to those in need this holiday season."

Thanks to the kindness of local families and businesses, this festive event truly embodied the spirit of giving, helping to brighten the holiday season for many in the community.

STAGE4BEVERLEY WINTER MUSIC FESTIVAL 9 - 16TH FEBRUARY 2025

February sees the return of the Stage4Beverley Winter Music Festival in Beverley which has become a major event in the town's calendar bringing music, comedy, the spoken word and for the first time dance (Northern Soul) to venues around the town.

Workshops, the Horizon Stage for young emerging musicians, a special concert featuring local Ukrainian musicians and singers, and finishing off the weekend evenings with a Late Night Festival Club, all provide more informal events at prices that everyone can afford.

Venues for the festival include the East Riding Theatre, the Parkway Cinema, Toll Gavel United Church, The Memorial Hall, Monk's Walk Inn and Wild Organic Eatery.

Headline artists appearing include: **Martyn Joseph** a singer songwriter with a difference, the **Pasadena Roof Orchestra** bringing the sounds of the 20's and 30's, **Henry Normal** and **Nigel**

Planer bring their own brand of Valentine celebrations with poetry, stories and comedy.

Carol Ann Duffy with **John Sampson**, the UK's the first female Poet Laureate, and **Michael McGoldrick, John McCusker** and **John Doyle** offering fiery music from North of the Border. **Rob Heron & the Tea Pad Orchestra** bring Rockabilly, Blues, Country, Swing, Soul and **Juan Martín** one of the World's greatest Flamenco guitarists. Finally **Steve Knightley**, founder and lead singer of the group Show of Hands performs his solo show. For the dancers we have the cream of the Northern Soul circuit **The Northern Soultrain**.

Other local artists will be performing over the weekend. Please support them.

Box Office: www.stage4beverley.com or **01482 874050**. Further information: **07801 124264**.



BEVERLEY PHOTOGRAPHIC CLUB - JANUARY PROGRAM

Please note - we are the Beverley Photography Club, not the Beverley Photographic Society.

Tuesday 14th January - 7pm at the Rose and Crown. Club Natural History Competition.

Tuesday 21st January - 7pm at the Rose and Crown. Presentation by Rob W. Old cameras, developing and techniques.

Tuesday 28th January - 7pm at the Rose and Crown. Club selection for the inter-club Millennium competition.

Tuesday 4th February - 7pm. Zoom presentation by Phil Savoi. Strictly telephoto.

All events are subject to change. Please check.

The aim of the club is to share knowledge and experience amongst all members in a friendly atmosphere.

We encourage our member's interests in all aspects of photography by means of various events and exhibitions. If you are interested in joining the club, please come along and meet the members. No commitments.

We are members of the Yorkshire Coastal Photographic Group, the Yorkshire Photographic Union and affiliated to the Photographic Alliance of Great Britain.
<https://ypu.org.uk/>

More information and contact details can be found on the following sites.
<https://beverleyphotographic.wixsite.com/club>

<https://www.facebook.com/groups/beverleyphotographyclub>

<https://www.flickr.com/groups/1095249@N24/>

CHAMPNEY TREASURE HOUSE IS NOW OPEN TO THE PUBLIC

Champney Treasure House, the newly renovated cultural venue in Beverley, has opened to the public after an essential period of renovation.

During a civic event which took place on Monday, 9 December, the venue was declared open by Councillor Linda Bayram, Chair of East Riding of Yorkshire Council. Councillor Bayram welcomed councillors, stakeholders, members of the local community and friends of the gallery during her speech and highlighted all of the many positive improvements which have been made to the venue.

Champney Treasure House celebrates the rich cultural history of the area and has been renamed in honour of John Edward Champney, a local businessman who in the early 20th century made several significant donations to the original Beverley Public Library and Art Gallery.

The renovated building is a centre for learning and discovery, housing the many services provided and celebrating the diverse and vibrant cultural offer of the historic venue. The £3.3 million scheme has enabled the council to make

significant improvements to the museum, archives, café area, tower viewing point, gardens, art gallery and library. The scheme has also enabled the council to relocate The Tourist Information Centre (TIC), Beverley Customer Service Centre and Register Office to the Champney Treasure House.

New services and features such as the Champney Room, the library's fully immersive sensory room and Changing Places facility have been introduced to the Champney Treasure House.

Councillor Nick Coultish, East Riding of Yorkshire Council's cabinet member for culture, leisure and tourism, said: "We are delighted to see that the Champney Treasure House has opened its doors to the public following its period of renovation.

Champney Treasure House is welcoming visitors who want to stop by, explore the venue and provide their feedback to staff members. The team will also be able to provide information on upcoming events.

To explore the new website and find out opening times, see: www.eastridingculture.co.uk/treasurehouse



BEVERLEY PARKWAY CELEBRATES 10 YEARS OF JUST BEVERLEY

This year marks a monumental milestone for Just Beverley, a magazine that has been a resourceful asset to Beverley's community for the past ten years.

As we look back on a decade of dedication to local stories, people, and events, it's clear that the magazine has become more than just a publication - it's a symbol of community spirit, resilience, and connection.

Just Beverley has truly earned its place as the go-to publication for all things related to this picturesque town and its surroundings. Over the past decade, it has stayed true to its mission of celebrating Beverley's rich history, diverse culture, and the people who make it unique.



This magazine has provided a platform for highlighting the achievements of local individuals, businesses, and organisations.

Whether it's celebrating a charity fundraiser, a new business opening its doors, or an extraordinary

person making a difference. Just Beverley has brought these moments to the forefront, ensuring that the efforts of those in the community do not go unnoticed.

At Parkway Cinema we've always believed that the magic of cinema should be accessible to everyone in our community, and over the years, we've had the privilege of working alongside local organisations, businesses, and residents to make that vision a reality.



From hosting Subtitled performances, Senior Screen and dementia-friendly screenings, kids clubs, toddler clubs, parent and baby clubs, live shows, Event cinemas, relaxed screenings, world cinema and much more. We have also supported and stocked local products as part of our 'Love Local' campaign. This is important to us in order to keep the connections of our wonderful community here in Beverley.

At the heart of all our initiatives is a commitment to inclusivity and community

engagement. Whether it's through accessible screenings, supporting local businesses, or creating opportunities for community connections, our goal is to make the cinema a place where everyone feels welcome, valued, and connected.

We feel immense pride to be within the Beverley community, we understand the power of film to bring people together, spark conversation, and create shared experiences. It's not just about the films we screen; it's about the way cinema can connect us with each other, enhance our community, and bring joy to people's lives.



Today, we celebrate with Just Beverley 10 years of publication and we look forward to continuing these efforts alongside the magazine for years to come!

If we haven't yet had the opportunity to connect, please do contact our team via our website or if you would like to connect with me directly I would love to hear from you: andrew.cooper@parkwaycinemas.co.uk

We love local!



DEMENTIA FRIENDLY AND RELAXING FILMS AT THE PARKWAY CINEMA!

Simon Foster has been involved as a local volunteer in helping to organise dementia friendly films in the Beverley and district area for over eight years.

The partnership between Parkway Cinema and Simon's small group of volunteers has grown through the increasing attendance of residents and carers from many of the East Riding Care Homes and more recently families and friends living at home who are affected by dementia. They are all thoroughly enjoying the event.

Showing every second month on the last Thursday morning of the month, the films bring people together in a welcoming and friendly environment which provides an uplifting social experience in a modern and comfortable setting.

Simon said, "We always choose musicals, comedies and some of the classic films that provide significant nostalgia and happy memories for the attendees. Mary Poppins and Miracle on 34th Street were the latest screenings and proved to be very popular. Films are played with slightly reduced volume, there are no advertisements and low lighting assists movement around the cinema. All the staff are dementia friendly aware and provide excellent support".

Do come along to our next film show on Thursday 30th January, arriving around 10.45am for free refreshments. The film starts at 11.30am, carers go free and regular ticket prices are discounted. You will not be disappointed.

PHOTO FINISH - AN EXHIBITION OF PHOTOGRAPHS CELEBRATING BEVERLEY RACECOURSE

During the whole of 2024 an intrepid group of seven photographers have been recording life at the racecourse in Beverley.

Sponsored by this magazine 'Just Beverley', and Dogger Bank Windfarm they have recorded life at the course during each race day but also at times when the course is busy with other events and improvements.

The final exhibition will be open to the public on Thursday and Friday 20th and 21st February 2025 between 10am and 4pm in the Paddock Bar at the racecourse.

The racecourse management have been extremely helpful in enabling this record to be made and the exhibition will be shown later in the year in Hull as well as in Beverley Treasure House early in 2026.

The exhibition itself concentrates on three aspects of life at a racecourse including the course itself and the staff (mainly temporary) who make things happen and the events which are additional to the races such as weddings and fairs; the runners and riders without whom there would be no point and last, but not least, the booted and suited aficionados who come along to have a fun time.

The same group of photographers have previously produced HUman Impact which told the stories of a hundred people living in HU postcodes through the pandemic as well as Fish!! which considered the demise of Hull's fishing industry in the 1970's through the eyes of those who experienced it.

The group concentrates on Hull and East Yorkshire and the people and places that make it special.





EVERY THURSDAY
(Doors open 9.30am)

Join us for a free brew and enjoy some great films on Beverley Parkway's Big Screen. Only £5 (or £6 for newer releases) with drink and biscuits included. Aimed at 55s & over. Films subject to change.

Thursday 2nd January -

Wicked

Starring: Cynthia Erivo, Ariana Grande, Jonathan Bailey, Ethan Slater.

Better Man (£6)

Starring: Robbie Williams, Steve Pemberton, Alison Steadman.

Mufasa (£6)

Starring: Aaron Pierre, Kelvin Harrison Jr., Seth Rogen, Mads Mikkelsen.

Thursday 9th January -

We Live In Time (£6)

Starring: Andrew Garfield, Florence Pugh, Grace Delaney.

Maria (£6)

Starring: Angelina Jolie, Pierfrancesco Favino, Alba Rohrwacher.

How To Make Millions Before Grandma Dies

Starring: Putthipong Assaratanakul, Usha Seamkhum, Sanya Kunakorn.

Thursday 16th January -

We Live In Time (£6)

Starring: Andrew Garfield, Florence Pugh, Grace Delaney.

Maria (£6)

Starring: Angelina Jolie, Pierfrancesco Favino, Alba Rohrwacher.

Here (£6)

Starring: Tom Hanks, Robin Wright, Paul Bettany, Kelly Reilly.

Thursday 23rd January -

Here (£6)

Starring: Tom Hanks, Robin Wright, Paul Bettany, Kelly Reilly.

Flight Risk (£6)

Starring: Mark Wahlberg, Michelle Dockery, Monib Abhat, Topher Grace.

A Complete Unknown (£6)

Starring: Timothée Chalamet, Monica Barbaro, Elle Fanning.

These are the films scheduled to open in January - all are subject to change. Check out up-to-date cinema listings at www.justbeverley.co.uk/cinema-times



We Live In Time

From 1st January
Starring: Andrew Garfield, Florence Pugh, Grace Delaney.



Nosferatu

From 1st January
Starring: Bill Skarsgård, Lily-Rose Depp, Aaron Taylor-Johnson.



A Real Pain

From 8th January
Starring: Jennifer Grey, Jesse Eisenberg, Kieran Culkin, Kurt Egyiawa.



Maria

From 10th January
Starring: Angelina Jolie, Pierfrancesco Favino, Alba Rohrwacher.



Babygirl

From 10th January
Starring: Nicole Kidman, Harris Dickinson, Sophie Wilde, Antonio Banderas.



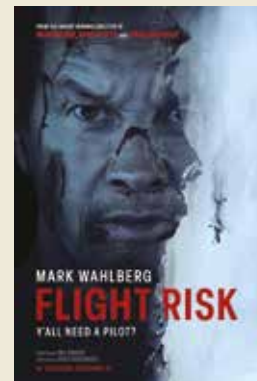
Here

From 17th January
Starring: Tom Hanks, Robin Wright, Paul Bettany, Kelly Reilly.



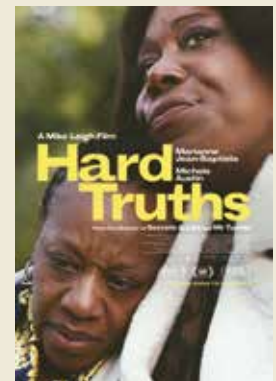
A Complete Unknown

From 17th January
Starring: Timothée Chalamet, Edward Norton, Elle Fanning.



Flight Risk

From 24th January
Starring: Mark Wahlberg, Michelle Dockery, Monib Abhat, Topher Grace.



Hard Truths

From 31st January
Starring: Marianne Jean-Baptiste, Samantha Spiro, Ruby Bentall.

YOUR LOCAL INDEPENDENT CINEMA



JOIN US FOR SOME GREAT FILMS AND BIG SHOWS THIS WINTER

WE LIVE IN TIME

Florence Pugh and Andrew Garfield will take your heart for a joyride in this shattering new movie about a love story running out of time. An up-and-coming chef and a recent divorcée find their lives forever changed when a chance encounter brings them together, in a decade-spanning, deeply moving romance.

From 1st January.



A REAL PAIN

Mismatched cousins David and Benji reunite for a tour through Poland to honour their beloved grandmother. The adventure takes a turn when the odd-couple's old tensions resurface against the backdrop of their family history. Starring Kieran Culkin, Jesse Eisenberg and Jennifer Grey.

From 8th January.



MARIA

The new film from the director of Jackie and Spencer, MARIA tells the glamorous, moving story of the iconic opera singer, Maria Callas. Paris, 1977: Once the world's greatest soprano, Callas now hides in an apartment, having lost her voice and retreated from the world. She dreams of returning to the stage, but can her body and mind take the pressure? Starring Angelina Jolie in an Oscar-worthy performance, MARIA is a sumptuous drama that hits all the high notes.

From 10th January.



BABYGIRL

Babygirl explores the complexities of power dynamics and sexuality within a professional setting as high-ranking CEO Romy Mathis (Nicole Kidman) embarks on a forbidden romance with captivating intern Samuel (Harris Dickinson), who is significantly younger.

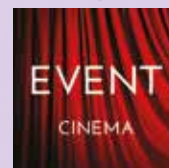
From 10th January.



HERE

From the reunited director, writer, and stars of Forrest Gump (1994), Here is an original film about multiple families and a special place they inhabit. The story travels through generations, capturing the human experience in its purest form. Directed by Robert Zemeckis, written by Eric Roth and Zemeckis and told much in the style of the acclaimed graphic novel by Richard McGuire on which it is based, Tom Hanks and Robin Wright star in this tale of love, loss, laughter and life, all of which happens, right Here.

From 17th January.



Event cinema offers something a little different to mainstream films. Live and pre-recorded shows beamed in via satellite from all over the world. Here are the latest live streams that you can enjoy on the big screen at Parkway Beverley.

**Wednesday 15th January, 6.45pm -
Royal Ballet & Opera: The Tales Of
Hoffmann**

Through the haze of the years, a poet remembers the women he loved. But when it comes to matters of the heart, nothing is as it seems. Particularly when the devil himself is involved...

**Saturday 25th January, 5.30pm -
MET Aida**

American soprano Angel Blue headlines as the Ethiopian princess torn between love and country in a new production of Verdi's Aida by Michael Mayer that brings audiences inside the towering pyramids and gilded tombs of ancient Egypt.

**Sunday 2nd February, 2pm & 2.30pm
& Tuesday 4th February, 6pm -
Les Misérables - The Staged Concert Live!
(40th Anniversary) 12A**

Featuring an all-star cast, Cameron Mackintosh's spectacular sold-out staged concert version of the musical phenomenon Les Misérables is an absolute must-see!

**Wednesday 5th February, 6.30pm &
Sunday 9th February, 2pm -
Macbeth: David Tennant and Cush Jumbo**

David Tennant and Cush Jumbo lead a stellar cast in a new 5-star production of Shakespeare's MACBETH, filmed live at the Donmar Warehouse in London.

**Thursday 20th February, 7pm -
NT Live: The Importance of Being Earnest**

Three-time Olivier Award-winner Sharon D Clarke is joined by Ncuti Gatwa (Doctor Who; Sex Education) in this joyful reimagining of Oscar Wilde's most celebrated comedy.

**Thursday 27th February, 7.15pm -
Royal Ballet & Opera: Swan Lake**

Prince Siegfried chances upon a flock of swans while out hunting. When one of the swans turns into a beautiful woman, Odette, he is enraptured. But she is under a spell that holds her captive, allowing her to regain her human form only at night. Von Rothbart, arbiter of Odette's curse, tricks the Prince into declaring his love for the identical Odile and thus breaking his vow to Odette.

IN THE PICTURE WITH JOSH

Firstly, Happy New Year to you all! Secondly, I want to congratulate Julian and the Just Beverley Magazine on 10 years in business, highlighting so many local businesses and events.

I struggle to write enough just for my column each month, so I can appreciate how much work goes into creating the magazine.

I wasn't really sure what to write for the 10th Anniversary edition, but I've decided just to share 10 of my favourite photography locations in East Yorkshire in no particular order.

You've probably been to some of them, maybe all of them, but if you're looking for somewhere to go for a walk with your camera in that fresh January air. Here are my suggestions.

No.1 - Beverley Westwood (Obviously a great place for a winter walk).

No.2 - Tophill Low Nature Reserve (Great for winter wildlife).

No.3 - Londesborough Park near Market Weighton.

No.4 - Driffied, Pocklington or Market Weighton Canal Walks.

No.5 - Bishop Wilton & Great Givendale.

No.6 - Millington Pastures & Huggate.

No.7 - Sledmere & Former RAF Cottam.

No.8 - Rudston Monolith.

No.9 - Flamborough Head (Great for Seal spotting).

No.10 - Spurn Point (Seals and Migratory Birds).

You can find more information about my work and full portfolios on my website and my social media pages and if you have any questions don't hesitate to get in touch.

Instagram: [@joshharrison.photography](https://www.instagram.com/joshharrison.photography)

Facebook: [@JoshHarrisonPhotography](https://www.facebook.com/JoshHarrisonPhotography)

Web: www.joshharrisonphotography.com

Email: info@joshharrisonmedia.com



IN THE GARDEN - A NEW YEAR A NEW START

Gardening is all about looking back and learning from the mistakes you made the previous year, the crops and flowers that grew well in your garden and those that didn't.

From a design perspective thinking about changing the layout of your garden in January can also be a time for reflection, questions such as, did this path work? Can I replace or reshape the flower beds?

An area that was created in my garden in lockdown was the connective potager, the cordon apples and the herb beds are already linked to the small kitchen garden, and so to increase the ability to be able to plant more vegetables I decided to extend the area into the current flower bed by placing a small risen bed where I could then grow a combination of cut flowers and vegetables.

The size of the border is 2 metres wide and 5 metres in length, not a large area but it still has the capacity to produce food and flowers.

The idea worked, but in 2024 the growth of the plants overall was so erratic that access to the area became difficult and so I have decided that not only will I increase the size of the risen bed but also dig out and replant the whole area with the aim of multiplying the yields but at the same time allowing me access throughout the year.

Plants that can be reutilised elsewhere will be potted up and when space allows be replanted,

the brick path will also be repositioned around the new beds.

Jobs to do in the garden:

If you haven't already done so prune your climbing roses, leave the rambling roses until after flowering.

There will now be a good supply of Swiss Chard, Kale and Spinach to be harvested from the garden. These can be added to numerous recipes for example kale in minestrone soup, layers of spinach in lasagne and fruit smoothies.

Cut and come again salads in the greenhouse are doing well there four large trays which were sown in the Autumn of 2024, have been harvested regularly.

When it comes to harvesting lettuce always take the outer leaves first as this will encourage new leaves to form which in turn will give you more growth and

ultimately more food! One of the most optimistic tasks in the early months of the year is looking through seed catalogues.

Ordering what you have perhaps sown in previous years but also maybe trying something new. Order your potatoes and start to sprout them by the end of January.

I find cardboard egg boxes useful for this task.

<https://ordinarygardener.com> - Julie Dowding



COUNTRYSIDE MATTERS WITH SAM WALTON

Farming has always been difficult and so far, the farming industry has somehow managed, despite all the rules and regulations plus red tape around to-day.

I think we are approaching perhaps some of the most demanding and more difficult times ahead than have ever been known. I am not sure how we will feed our ever-growing population, and I wonder if this applies to all

farming worldwide and if it does, where will we be able to import food from? The climate used to be ideal for our production but is getting more and more changeable with lots more rain, which is the reason the last harvest was the worst on record, due to the exceptional rainfall.

Having said that, we still have some countries who do not get enough rain and have drought, so we could be in an even more difficult situation. For the imports we have, if the global climate continues as it has recently?

If so, what can we do about it as some of our imports could no longer be available? Any suggestions?

Currently on my farm, the crops were drilled in good time and appear to be quite promising, but of course this can all change. They looked promising this time last year and look what happened.

My wheat yield was almost half of what I expected and of course it was the same for my neighbours and the area generally. Being a farmer, one has to be optimistic or there would be very few farmers left.

Yes, it is still a way of life and an interesting if confusing one sometimes, but we still keep battling on as best we can to hopefully still supply the nation with what we have done for many years.

HAPPY NEW YEAR.



LEWIS NORTHEN FUNERAL DIRECTORS REFLECT

Lewis Northen, a family funeral director, founded his business 4 years ago on the 1st December 2020. Lewis Northen Funeral Directors plays a vital role in Beverley, offering compassionate, personalised support during life's most difficult moments.

Lewis said, "We are a family-run funeral service that understands the unique needs of the community, building relationships rooted in trust, empathy, and familiarity. We provide a farewell which reflects the values, traditions, and wishes of the family, honoring their loved ones with dignity and care".

Lewis born in Beverley has seen a number of changes over the years and took time to reflect back over the years and think about the changes in Beverley, whilst maintaining a community village feel.

Lewis commented, "Our local connections, built from a long-standing presence in Beverley remain strong, whilst we note how Beverley has changed particularly over the last decade with a new



housing community, new developments Flemingate incorporating Parkway Cinema and the renovation of the old Baptist chapel from the early 1900s, a place where Beverlonians came to get married, christened, pray or attend Sunday school, it is now a hub of entertainment and education for residents young and old.

"The Beverley Arms recently renovated inviting people to stay in Beverley, in the historic 18th Century coaching inn. To meet the needs of residents, businesses and visitors new infrastructure developed to ease movement around Beverley to attract visitors, businesses and residents for many years to come".

Lewis concluded "Beverley, a beautiful Market Town with large village feel".



LEWIS NORTHEN
FUNERAL DIRECTORS



MY FAMILY TAKING
CARE OF YOURS



Get In Touch
1 Lincoln Way, Beverley, HU17 8RH
info@lewisnorthenfuneraldirectors.co.uk
www.lewisnorthenfuneraldirectors.co.uk
01482 888 658



Born and raised in **Beverley**, we are proud of the funeral services we offer to our local community.

As a family business we want you to have confidence in us to support you from the first point of contact, throughout and thereafter. The moment your loved one comes into our care they will be treated with care and respect. We offer a comprehensive range of funeral services ensuring you receive the perfect funeral service for your loved ones.

We are available 24 hours a day, 365 days a year, we will guide and support your family throughout.

My family taking care of yours

Giving the personal touch to funeral services in Beverley and surrounding areas.

Funeral plans, memorial jewellery, available 24/7 365 days a year.



LINKAGENCY - A SIGN TO MOVE FORWARD

Jayne Morgan MNAEA, Personal Agent, has seen many changes over the last 20 years as an estate agency owner, property consultant and industry advisor.

She has always been ahead of the times embracing new ideas and technologies as they have arrived in the industry. Having owned one of the region's largest hybrid estate agency branches, she has a wealth of expertise in the residential sales sector in the East Riding and North Yorkshire.

The estate agency sector has undergone significant changes over the past 20 years, driven by advancements in technology, evolving consumer expectations, and market trends.

Online advertising property portals, especially Rightmove and Zoopla, have become essential for property searches, thus making reliance on traditional window displays in high street agencies a thing of the past.

The best practice for agents who now rely on these portals involves using professional photography, drone aerial photography, virtual tours and virtual staging which Jayne has embraced in her recent new build/vacant property listings. Such practises enable potential buyers to view properties remotely before booking viewings and making offers.

The technology used by estate agents has become more sophisticated with CRM systems - Customer Relationship Management - helping to streamline processes. There has been a rise in on line only agencies who offer lower upfront fees. Although these models have challenged more traditional models of estate agency, they definitely have not replaced them; the majority of customers still prefer to deal with an individual agent who looks after them throughout the selling process. A Personal Agent such as Jayne is best placed to do this.



More recently social media platforms such as Instagram and Facebook are now used for additional property marketing and for targeting certain demographics. There have been shifts in customer expectations with buyers and sellers expecting instant communication and real-time updates. Transparency in fees, processes, and communication has become a priority for many clients.

There have been Regulatory Changes especially regarding AML: anti money laundering regulations. Licensing and training requirements for agents has been tightened. Increased awareness of environmental issues has led to a focus on energy-efficient homes, where consumers are more aware of energy ratings shown in the EPC - the Energy Performance Certificate - a legal requirement when selling a property.

Since the pandemic, COVID-19, there has been an acceleration in the reliance upon virtual viewings. Changing lifestyle among buyers with many home owners still spending a proportion of their time working from home, has led to the demand for larger homes. There has also been a marked preference for properties in suburban and rural areas with green areas and countryside close by.

If you are looking for a highly qualified, reliable, experienced estate agent who embraces new technology, yet maintains traditional values, talk to Jayne, she is always happy to help.



Family-run shop in Flemingate, Beverley
Large selection of Handpoured Candles,
Wax Melts, Bath Bombs and Soaps
available in store.

Wishing Everyone a Happy New Year



Recycling Scheme: Return packaging and used wax
(from our products) for cashback or store credit

Mon-Sat 9:30am-4:30pm
Sun 10:30am-4pm



Shop online at www.scarlet-lily.co.uk with code
'JUSTBEVERLEY' for free local delivery

Jayne at
linkagency



linkagency
Sold

01482 699007
www.linkagency.co.uk

linkagency
For Sale

01482 699007
www.linkagency.co.uk

**Have you
seen these
signs?**

"I dedicate my time and energy to clients throughout their property selling and buying journey, giving them the comprehensive, professional service they deserve."



01482 699007 (Beverley and Surrounding Villages)
www.propertyjayne.co.uk | jayne@linkagency.co.uk

HOW YOU CAN BEAT THE 60% TAX TRAP

Most people are aware that income tax is charged at 0%, 20%, 40% or 45%, depending on how much you earn. The rates are slightly different in Scotland, but a 60% tax band doesn't seem to exist - on paper. However, higher-rate taxpayers beware.

If there's one word to describe the UK tax system, it's 'complicated'. Regulations, as we saw in the Autumn Budget, can change frequently and even if you're more informed than most, it's easy to misinterpret the rules - and end up walking into a 60% tax trap without realising.

What is the 60% tax trap?

They call it 'stealth tax'. A 60% rate of income tax

isn't publicised in any HMRC guidelines because it's an unofficial effective rate of Income Tax. On paper it doesn't seem to exist.

Yet, because the allowance for higher taxpayers tapers off the more you earn, it can become very real at tax year-end.

The result? Those earning between £100,000 and £125,140 can end up paying 60% tax. If you're in a profession that rewards strong performance with good bonuses, a great year 'on paper' can have a nasty sting-in-the-tail at tax year-end.

Why the 60% tax trap happens

Once you're earning £100,000 or more, the £12,570 personal allowance slowly reduces or tapers off.

The personal allowance is the amount of income you can earn each year without paying Income Tax. Currently, the allowance tapers down at a rate of £1 for every £2 you earn above £100,000.

In real terms, this means that for every £100 of income between £100,000 and £125,140, £40 is deducted in Income

tax, while another £20 is lost by the tapering of the personal allowance. You will also pay Employee National Insurance at 2% on the income. This amounts to a 60% tax rate, plus National Insurance.

Once you're earning £125,140 or more, you don't get any personal allowance at all. It feels like a double jeopardy.

So is it possible to avoid, or mitigate the 60% tax trap?

Beating the 60% tax trap - top up your pension

One of the quickest and simplest ways to bring your taxable income below the threshold is to pay more into your pension before tax year-end. This is a win-win, since you reduce your tax bill and boost your retirement fund at the same time.

Here's an example. You get a £1,000 pay rise or bonus, which takes your taxable income to £101,000. If you pay that £1,000 into your pension, you won't enter the 60% tax zone and you'll get the benefit of a 40% top-up on your contribution, thanks to pension tax relief.

For your information, you can pay a maximum of £60,000 into your pension each year, before you lose government tax relief on your contributions, with carry forward also potentially available.

How pension top-ups can cut your tax bill

If you're just over one of the tax bands, topping up your pension can reduce the amount of tax you pay in a number of ways. Since any contribution you make reduces your taxable income, it's worth paying in as much as you can afford.

A well-timed pension contribution might help you



Achieve the future you want

We all imagine our future differently.

Whatever your goals, we believe there is value in taking advice from someone you trust. We will work with you to plan, grow and protect your financial future.

Let's start a conversation.

Navigation Wealth Management

01482 379504
navigationwm@sjpg.co.uk
www.navigationwm.co.uk



Navigation Wealth Management Ltd is an Appointed Representative of and represents only St. James's Place Wealth Management plc (which is authorised and regulated by the Financial Conduct Authority) for the purpose of advising solely on the group's wealth management products and services, more details of which are set out on the group's website www.sjp.co.uk/products. The 'St. James's Place Partnership' and the titles 'Partner' and 'Partner Practice' are marketing terms used to describe St. James's Place representatives.

SJP Approved 10/12/2024

stay just below the higher rate tax band, so you avoid paying more income tax.

You can also massage your income back down below one of the tax band thresholds if you receive Child Benefit. High-income Child Benefit is a tax charge on families where one partner has a net adjusted income of more than £60,000. This is another 'tapered' charge, with an extra 1% deducted for every £200 of income over £60,000. Once the higher income earner hits £80,000 take-home, the benefit is withdrawn.

Once again, putting money away in your pension may bring you back down into a lower rate tax band. If you are a higher taxpayer, remember you need to declare – and claim – that tax relief on your pension contributions on your self assessment tax return.

Stay in control of your taxes

Tax rules are complicated, and governments often 'move the furniture around' to balance the public finances. Even if the 60% tax trap doesn't apply to you, it's worth remembering that taxes and tax regulations in the small print can be easily missed. And as your income rises, so might your tax vulnerability. A minor change might trigger a major effect.

We're here to work with you and help you navigate the ever-changing landscape. Checking in with your financial adviser on a regular basis means you can often swerve any tax 'sinkholes' or at least manage them. The lower your tax bill, the more money you have to enjoy your family time together.

Contact Navigation Wealth Management today if you'd like some more advice on beating the 60% tax trap on **01482 379504** or visit our website at www.navigationwm.co.uk.

The value of an investment with St. James's Place will be directly linked to the performance of the funds selected and may fall as well as rise. You may get back less than the amount invested.

The levels and bases of taxation, and reliefs from taxation, can change at any time and are generally dependent on individual circumstances.

Any tax relief over the basic rate is claimed via your annual tax return.

TC Patisserie

We make our own patisseries.

We are a French food shop complimenting our own products

We make Meals you can reheat at home bought over the counter or pre ordered, via our mailing list or messenger

We can cater for any occasion, buffets, dessert tables or full 3 course meals

We are open Tuesday-Saturday 9am - 4pm.



❄️ *Wishing you a Happy and Healthy 2025* ❄️

10 Lairgate, Beverley, HU17 8EE

Tel: 01482 860884

Jadan

Print that gets you noticed

Jadan Press are a leading family run commercial and trade printer based in Hull.

With over 25 years experience, we are renowned for producing exceptionally high quality print, design and finishing.

**BROCHURES LEAFLETS
POSTERS CALENDARS PADS
LARGE FORMAT PRINTING
STATIONERY MAGAZINES
SAFETY SIGNAGE BANNERS
LABELS DIE-CUTTING
and much much more**



01482 610902

sales@jadan-press.co.uk www.jadan-press.co.uk

Rainbow House, Kimberley Street, Hull, HU3 1HH



[jadan_press](#)



[jadanpress](#)



[jadanpress](#)

10 YEARS OF JUST BEVERLEY AND 10 SUGGESTIONS FOR 2025



Wow, a quarter of the way into the century and 10 magical years of Just Beverley, bringing good news and positive stories to the local area and beyond. The New Year is a good time for a reset and form new habits to ensure you achieve your 2025 goals.

This brings me to the topic of **Motivation versus Discipline**. Motivation is generally driven by an external influence - a book, a documentary you've watched, a speech you've listened to or an inspiring conversation. Motivation is great to kick-start new, healthy and positive routines, to make changes, to follow goals and reach our dreams but can be short-lived and therefore the effects of that initial motivation can fade quickly. The quote from American motivational speaker, Zig Ziglar acknowledges this reality **"People say that motivation doesn't last. Well, neither does bathing - that's why we recommend it daily."**

To sustain a new behaviour, we need discipline, and discipline is knowing what you should do, even when you really don't want to do it. Discipline will carry you across the finish line long after motivation has left because discipline is an internal force therefore within your control and comes from establishing good habits daily.



Once you've established discipline and set it into motion, habits become second nature and procrastination is lessened. New Year's resolutions become much easier to follow through, whether it's a new eating and exercise plan, learning a new skill or committing to being more organised or completing a pet project.

Here are a few areas you might like to consider:

Personal Growth

1. Set a Theme for the Year: Choose a guiding word or phrase, like "balance," "adventure," or "focus," to steer your decisions throughout the year.
2. Learn Something New: Commit to mastering a skill, language, or hobby you've always been curious about.
3. Declutter Your Space: Start the year by simplifying your environment - clean out a room, wardrobe or your computer.

Health and Wellness

4. Create a Consistent Routine: Design a morning or evening ritual that includes time for self-care, meditation or exercise.
5. Focus on Hydration: Begin a habit of drinking more water daily; even small steps like carrying a reusable water bottle.

Relationships and Connections

6. Reconnect with Loved Ones: Reach out to someone you've lost touch with or schedule regular check-ins with family or friends.
7. Practice Kindness: Make it a goal to perform a random act of kindness every week - small gestures - big difference.

Career and Finances

8. Review Your Finances: Start budgeting, tracking expenses, or setting financial goals like saving for a big purchase or paying off debt.
9. Invest in Professional Growth: Take an online course, attend a workshop, or build connections in your industry.

Fun and Adventure

10. Plan an Adventure: Whether it's a short road trip, an international journey, or simply exploring a local park, schedule something exciting to look forward to.

And remember... "You can have everything in life you want if you will just help enough other people get what they want". **Zig Ziglar**. Every Tuesday, you can take time out for yourself with the free mindfulness session from 7.15 pm to 7.45. For more information visit www.francesdunning.com or contact me, Fran Dunning on **07973 819867** for details of mindfulness zoom link.

All About You Hypnotherapy

Helping You Get Peace of Mind in Practical Ways

I've been helping people of all ages increase their levels of confidence and improve their life for over 20 years using hypnotherapy.

I can help you reduce anxiety, get rid of fears and phobias and embed positive habits to increase your levels of health and wellbeing.

Based on Victoria Dock and available face to face or via Zoom globally.

Let me help you to enjoy a new sunrise

Fran Dunning

Clinical Hypnotherapist & Provider of Mindfulness in the Workplace
Victoria Dock, Hull
Mobile: 07973 819867
e-mail: info@francesdunning.com
website: www.francesdunning.com

Four Generations, Giving Over 130 Years Service

Herbert	Eardley	Geoffrey	David
1870-1962	1908-1986	1939-2015	1964



Golden Charter
Funeral Plans



- Funerals Respectfully Conducted
- 24 Hour Out of Hours Service
- Free Advice & Support
- Private Restrooms
- Prepaid Funeral Plans Available
- Finance Options Available



Tel: 01482 844695
www.hkempandsonltd.com

259 Hallgate, Cottingham, East Yorkshire, HU16 4BG
Fax: 01482 843898
Email: hkempandsonltd@gmail.com

CELEBRATING FIVE YEARS OF ANCORA LAW: EXCELLENCE IN PROPERTY LAW

This year, Ancora Law proudly marks five years of dedicated service in the field of property law.

From its inception, the firm has been committed to providing innovative, client-focused solutions in real estate and property matters.

As we celebrate this milestone, we reflect on our achievements, honour the relationships we've built, and look forward to the road ahead.

A Message from Our Director, Matthew Hudson

Matthew Hudson, Director of Ancora Law, shares his reflections on this important occasion: "As I reflect on Ancora Law's five-year journey, I am filled with immense pride and gratitude. What started as a dream has grown into a thriving firm built on trust, hard work, and commitment to excellence.

Our success is deeply rooted in the relationships

we have fostered - with our clients, our team, and the community at large. Every case we've handled, every challenge we've overcome, and every milestone we've achieved has been a collective effort.

I want to thank our clients for entrusting us with their matters and our incredible team for their dedication and passion. Your belief in our vision has been our greatest motivator.



Matthew Hudson

As we celebrate this milestone, we also renew our promise to stay true to our mission: to deliver excellent service!"

Looking to the Future

This anniversary is more than a celebration of the past - it's a pledge for the future. Ancora Law is committed to remaining at the forefront of property law, embracing industry developments, and exploring new opportunities to better serve our clients.

If you are seeking a property solicitor for a matter, please reach out to the team.



**Ancora Law, Minster House, Flemingate, Beverley, HU17 0NT.
T: 01482 426121
W: ancoralaw.co.uk**



The Ferguson Fawsitt



OPENING HOURS

MON & TUE:
16:00 - LATE
WED - SAT:
09:30 - LATE
SUN: 12:00 - 22:00

What's on at the Fergie

1st Thursday of the Month - Bingo from 2pm

4th Thursday of the Month - Live Music

1st Friday of the Month - Quiz Night from 8.45pm

Happy New Year



TUESDAY TO SATURDAY:
AFTERNOON TEA 12PM to 5PM
www.fergusonfawsitt.co.uk
tel: 01482 526317

OPEN 7 DAYS

FOOD HOURS

WED - SAT:
09:30 - 19:30
SUN:
12:00 - 18:30

BROOK TAVERNER - 6 YEARS IN BEVERLEY MAY 2025

In May 2019 Beverley welcomed prestigious men's outfitter, Brook Taverner to Toll Gavel.

Local Beverley resident and gentleman's retail clothing expert Lee Wardell took the role of Store Manager.

At the opening of the store Lee commented, "There is a gap in the market for the type of clothing and accessories Brook Taverner supplies. The whole Brook Taverner experience is very impressive. This brand provides everything a man could possibly need and it's all in one place in Toll Gavel."

In May, Brook Taverner will celebrate 6 years since the store opened under the expert guidance of Lee. He has continued to fulfill all expectations of

his clients and continues to delight with customer experience and delivering a superb shop window and store layout which makes co-ordinated shopping and outfitting for men easier.



Lee commented, "We are known for our product quality and customer service at competitive prices, and over the last 4½ years we have seen a change in the shopping experience, whether via the shop or online. We continue to provide and build on our customer service. It only feels like yesterday since opening the doors, our store is still in its infancy in comparison to the Brook Taverner brand, which stretches back to 1912!

"The Brook Taverner name stems from founders Frank Brook and Walter Taverner. Their desire to provide leading quality cloth's and materials across the country for garment creation laid the foundation of the synonymous British Heritage".

When Lee opened the store in 2019, Beverley was the first English based Brook Taverner store, the 4th location in the UK (with 3 Scottish stores).

Now Brook Taverner has 14 stores across the UK, providing the same customer experience nationwide.

Lee said, "As we celebrate Just Beverley reaching their 10th Anniversary we look forward to celebrating our 6th year in Beverley this coming May. From myself and all the staff we wish you a Happy and Healthy 2025 and look forward to welcoming you to our store on Toll Gavel".



BROOK TAVERNER
35 Toll Gavel, HU17 9AA
01482 882356

LAIRGATE PROPERTY GETTING A NEW FEEL

R D Stott has recently taken on the task of renovating the listed building located in the centre of Beverley on Lairgate.

With a history of working on listed and old buildings over his past 30 years as an architect, he is well aware of the possible pitfalls and issues that he will have to deal with.



Richard commented, "I always believe that one of the first things to do is to engage with the key stakeholder groups. Neighbours, local societies, the local authority and building control to name but a few to agree a program of works that will be satisfactory for all.



Before we bought the building we had already had a meeting with the neighbours, and then in the last month we have been

fortunate to have a group from the Beverley Civic Society come and visit who provided a lot of insight into the history of the building.

We have also had meetings on site with the Conservation Officer and Building Control with a view to agreeing a program of works that will maintain a delicate balance between preserving its historic fabric while meeting modern standards, incorporating modern functionality which will be key to the buildings success".

Careful planning is essential to ensure any alterations respect its original craftsmanship.

As we come to the end of 2024 with the strip out nearing completion we look forward to 2025 and the start of internal fitting out in particular, with upstairs the conversion starting to take shape.

January will start to see bigger changes with a respectful approach that preserves the building's unique character for future generations while being fit for purpose with modern fixtures and fittings as expected in a new home for a family to enjoy.

Watch this space for updates as the property looks forward to a new lease of life.



just BEVERLEY

WIN A HAMPER!
FESTIVE RECIPES
CHRISTMAS HINTS & TIPS
FREE
ISSUE 1

FOOD & DRINK, HOME & PROPERTY, HEALTH & BEAUTY, TECHNOLOGY, EVENTS



just BEVERLEY

WIN A FLOWER ARRANGEMENT!
MONEY SAVING OFFERS
VALENTINE'S DAY GIFTS
FREE
ISSUE 2

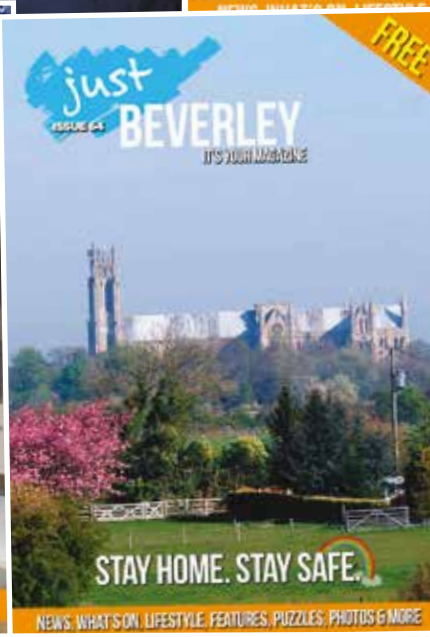
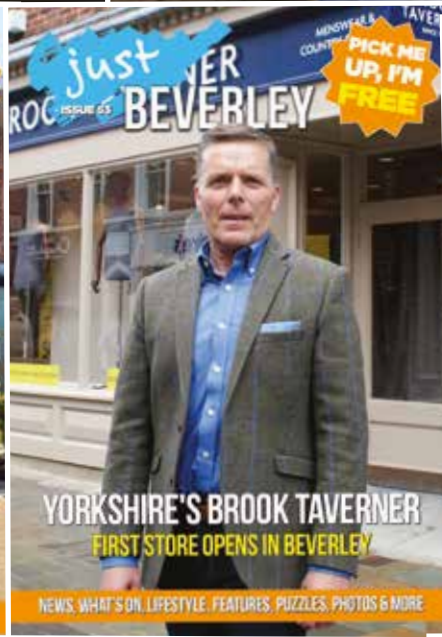
NEWS, EVENTS, HISTORY, HEALTH & BEAUTY, TECHNOLOGY, PUZZLES

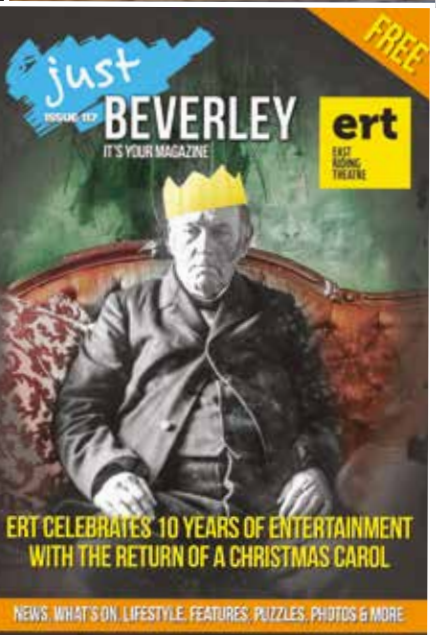
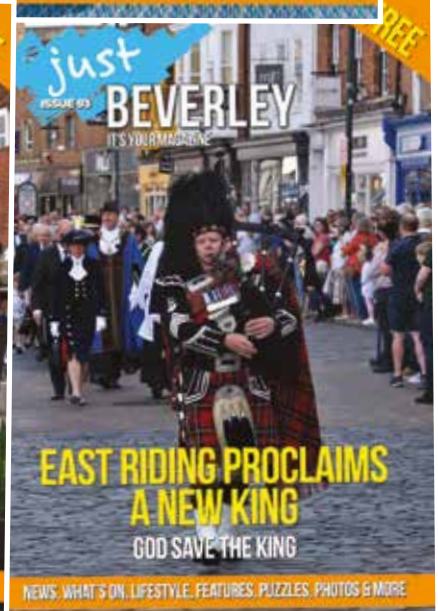


just BEVERLEY

justbeverley.co.uk
FREE
ISSUE 3

NEWS, EVENTS, HISTORY, HEALTH & BEAUTY, TECHNOLOGY, PUZZLES





I'VE BEEN THINKING... SAYS COLIN RAYNOR

So here we are at the start of a New Year and for some people it will mean they can open a brand new diary and record another chapter of their life over the next twelve months.

I am aware that for others making a record of the events of their daily life would be anathema. Pointless. A waste of time. Who would want to read it? I suggest that very question may get us nearer to understanding why people keep diaries.

There continues to be a proliferation of diaries of every size and detail in shops. So those people who produce them must still think there is a market for diaries despite the numerous items (often smaller) that a person can wear about their person that would seem to fulfil a diary's purpose.

Why record on paper when your next appointment is, or the date you need to renew an insurance cover, when it is all there on your wrist to alert you?

So now I am at the point when I can ask two questions. Does keeping a diary detailing your daily life have a genetic history to it? Or secondly, does the fact that you don't see the point of a keeping a diary as I suggest, mean you do not feel

the need to recall what you did last year (or even month) and identifies you as a free spirit who lives for the moment.

Or maybe you have the innate ability to remember when asked, details of past events. All I can say to that is, just you wait as the years pass by!

Both my wife and I had to rely a great deal on a well maintained diary during our working life and I will concede that the information about people that we had documented would not be allowed today. The day I lost my works diary by leaving it on the roof of my car was one of the worst days of my life. But my dear wife has carried on a tradition of writing a daily diary ever since we both retired from work many years ago following in the footsteps of an Auntie who also wrote a diary but in a slightly different style.

She never married but had a very active life over many years. As well as noting particular events and places she had been, she would also use her diary to record how she felt about her life.

In this way, as we read her diaries after she died, we were able to gain an insight into her life that we had not known about when she was still alive.

The detailed way my wife maintains a record of the busy life we lead leaves little room for such introspection.



I do suggest however that there is need for both kind of diarist.

Let me offer you an example. Over the years, in conversation, it is often the practice that you will hear a person use the phrase "before the war" and it is accepted the recipient would know that was the Second World War and therefore understand the time that was being referred to. I suspect that such conversations may nowadays include the phrases "before, or since, Covid" such was the historical influence that short period of time has had on our lifestyle.

I can recommend a short fifty page book by Alan Bennet which he calls "House Arrest". In this book he combines factual incidents in a diary form with comments about his experience of life during Covid when our personal lives were restricted in so many ways. We cannot all be as erudite as Alan Bennet but that is the true merit of a diary. It is your life you write about So go on. Have a go this year.

MHM - MAKING A DIFFERENCE TO PEOPLE'S LIVES

Mental Health Mates provides a safe place for people to come together and connect without fear or judgement, creating a supportive network for people experiencing mental health challenges and an opportunity to turn negative experiences into positive ones.

MHM provides a healing environment, but it is not therapy. We are not experts in mental illness but have personal experience in it.

It is peer support at its finest: we have seen people thrive through our walks, not to mention forming friendships that help people move forward and grow.

After reading a book by Bryony Gordon, the founder of Mental Health Mates nationally, and after a lifetime of battling with my own mental health, I decided to take the plunge and start Mental Health Mates Beverley.

In January 2019, I put a post on Facebook, advertising that I would be outside the Foresters Arms at 11am on 23rd March 2019 if anyone wanted to join me for a walk and talk. To my amazement 12 people turned up! Since then, we have gone from strength to strength and we have

a Facebook group of 1200 people, we have had walks that have been attended by between 20 and 70 people, and our walkers are of all ages.

Since the start of MHM Beverley, I have always raised the money for us to come together and celebrate the start of Christmas, with a private showing of a Christmas film at Parkway Beverley.

Christmas can be a difficult and isolating time for anyone and I feel like our events at Christmas bring people together for something special and fun to start the holiday period.

We gave out 'random acts of kindness' gifts for people to give to someone on their way home and collected food donations and £182 for the local Foodbank.

What are the plans for 2025?

Since starting the walks, they have evolved and I am regularly invited to Longcroft School to participate in annual workshops and a walk with the students during Children's Mental Health week, have held walks at HMP Humber, and I have collaborated with many more community groups in the hope it raises awareness about the wonderful support network we have in our community.

I encourage the group members to get involved in their local community as this can help people feel less isolated and we have also seen some wonderful friendships form.

We have been involved in some amazing events such as The Pancake Race, Beverley Pride, Bev Fest and the Caring Christmas Campaign which supports Cherry Tree Centre and



East Riding Foodbank. We have held joint walks litter picking with The Wombles of Beverley, and working with Andy's Man Club, Light in the Darkness, Morrisons, and Tesco Community Champions, recently being successful in being awarded a Community Grant nomination at Tesco Beverley and from One Stop Flemingate.

We have also been able to sponsor a local girls' football team, with help from TMX and Raymac Signs. This has been important to me and to the group, so that we can help raise awareness of the importance of openly discussing mental health matters among girls and young women, something I am very passionate about.

In 2025, we will be back with regular walks, collaborations with other community groups, and hopefully welcoming new members.

For more information please follow us on **Facebook at Mental Health Mates Beverley**, or **MHM_Beverley on Instagram**.

If anyone out there is struggling, please know that there are people out there who care, and there is support available.

Hull and East Yorkshire MIND: hey mind.org.uk
Samaritans: 116 123
Andys Man Club: andysmanclub.co.uk



BARKING BUBBLES AT LECONFIELD KENNELS & CATTERY

Exciting times are ahead at Leconfield Kennels and Cattery, ringing out the old and bringing in the new. With recent changes and deep clean complete at the kennels marking another step forward in providing a safe, comfortable, and welcoming space for pets.

A refreshed, hygienic environment not only ensures the health and happiness of the animals but also gives owners peace of mind knowing their beloved companions are in the best possible care.



Nigel said, "We wanted to take time to have sparkling clean enclosures, improve facilities and ensure every detail reflects a commitment to excellence, introducing Megan's Barking Bubbles to a brand new grooming room tops everything off nicely."



A grooming service is an essential addition, offering more than just aesthetic benefits. Regular grooming improves a pet's overall health, preventing issues like matted fur, skin infections, and overgrown nails.

It promotes better hygiene, comfort, and even emotional well-being, as pets feel refreshed and pampered.

Beyond the practical, grooming also strengthens the bond between humans and animals, as each session becomes an opportunity for care and attention. Together, these improvements elevate the kennel into a true haven for pets."

Megan commented, "Barking Bubbles opened its doors at the beginning of December and so far has been a hotspot for all different breeds of dogs, from little chihuahuas to giant St. Bernards!

"To show our commitment to customers we have introduced a loyalty card scheme, where you will receive 10% off your fifth appointment and 20% off your tenth appointment."

Megan went on to say, "I am passionate about pampering dogs, with over five years experience, a level 3 diploma in dog grooming, level 2 in animal care as well as being fully first AID trained - for both pups and their humans - Barking Bubbles is the perfect place to bring your dog for all of their grooming needs."

Leconfield Kennels and Cattery look forward to 2025 welcoming customers old and new and invite pet owners to have a look at the changes they have made, giving them the confidence their



pet is going to be well looked after the Leconfield Kennels way.

Leconfield Kennels and Cattery, Arram Road, Leconfield, HU17 7NP.
Office: 07360 276707
Out of hours: 07946 193269
Web: www.leconfieldkennelsandcattery.co.uk

To book Barking Bubbles
Call: 07500 931566
Email: barking_bubbles@outlook.com
Web: www.barkingbubbles.co.uk
Instagram and Facebook: @Barking_bubbles_



MKM BEVERLEY: OUR LAST 10 YEARS

Over the past decade, we've experienced incredible growth and transformation, becoming a leading provider of building and construction supplies in Beverley and East Yorkshire. By always putting our customers first, we've expanded our offering to become a one-stop stop for local tradespeople and the public.



Kitchen and Bathroom Showroom

We introduced a stunning new showroom to meet the growing demand in the area for high-quality kitchen and bathroom products.

This space allows you to explore a wide range of stylish, innovative designs and find the perfect fit for your home, with our friendly team of experts able to assist every step of the way.

Roofing Range

We expanded our range to include roofing products and brought on a dedicated roofing specialist to provide

expert advice. So now local tradespeople can access everything they need to complete their roofing projects with ease and precision.

Electrical Range

To supply electricians in the local area, we added a comprehensive range of electrical products with an expert in the branch to support our customers with expert advice. We've got everything you need for effective and efficient installations.

Plumbing & Heating Growth

Our plumbing and heating department has grown significantly, and we now offer an extensive range of heating systems, plumbing fittings, and renewable energy solutions.

With the help of our knowledgeable experts, plumbers and heating engineers can access the latest industry solutions and sustainable options for their projects.

Expansion of Landscaping Offering

Outdoor living is more popular than ever, so we've expanded our



landscaping department. We're here to help you transform your outdoor spaces into functional and beautiful areas.

We even have a landscaping display that you can browse to find inspiration for your project.

At MKM Beverley, we're passionate about meeting our customers' needs.

Over the past decade, this commitment has helped us become a trusted partner for trade professionals and homeowners.

Whether you're a seasoned builder or a DIY enthusiast, we're here to help you bring your vision to life.

**MKM Beverley, Swinemoor Lane, Beverley, HU17 0JZ.
Tel: 01482 880088.**



Botterill & Co

Chartered Certified Accountants

We are a modern and professional accountancy practice ideally located to serve businesses in Beverley and the surrounding area.

We utilise modern accounting technology to provide you with a cost effective, professional service.

Our services:

- Annual Accounts
- Tax Planning
- Management Accounts
- Tax Returns
- Company Formations
- Payroll
- Cloud Accounting
- Bookkeeping & VAT

For a free initial consultation please contact us:

Office: 01482 862240
Email: gareth@botterillco.co.uk
Website: www.botterillco.co.uk

1st Floor Offices, 40 Norwood, Beverley, HU17 9EY.

Create your **PERFECT SPACE** with MKM



Book a **FREE** design appointment with our dedicated kitchen & bathroom specialists.

Swinemoor Lane **Beverley**
HU17 0JZ **01482 880088**

FREE
LOCAL
DELIVERY

mkm.com

MKM

W H HALMSHAW - WELCOME 2025 APPRECIATING BEVERLEY

Beverley, like most Market towns, has undergone positive transformations over the last 20+ years since we opened our doors on Wibert Grove, blending rich history with modern innovation.

Beverley has expanded and changed to become a thriving centre of culture, sustainability, and community spirit.

Fiona commented, "It is always a pleasure to serve on the counter, to chat to our customers, to appreciate how friendly people are in Beverley".



Fiona continued, "Our product range has changed over the years to meet our customers needs and reach out to a wider market. We have noticed how Beverley has adapted as well, once limited to local produce now featuring artisan goods, global cuisines, and eco-friendly



products, attracting visitors while supporting local economies. Having a business close to the Beck also allows us time to appreciate nature, the countryside and the work that has gone on to improve the area, including the artistic work on the bridge structures transforming the urban area".

This combination of historical preservation, modern amenities, and a welcoming spirit makes today's "Beverley", more dynamic and inviting than ever before.

REFLECTIONS OF THE LAST DECADE

Just Beverley is celebrating 10 wonderful years of publication. Since 2014, we've heard many stories from local people where topics of conversation were plentiful.

The most dominant event that took place however, was the Covid 19 pandemic. This affected communities just like ours, in many ways. Some were hit financially, businesses going bankrupt, not to mention the impact on people's lives.



Many people lost their lives and did not get opportunities to see loved ones. Many felt isolated and scared at home, children went without education, not attending their usual clubs and community events.

Yet, we somehow managed to build up new communities online. Everything from keeping fit to starting up shared hobbies and prioritising mental health; new communities were formed; people began working from home and focusing more on their well-being.



In a strange way, this had some positive outcomes. Some workplaces are now offering well-being services, the local yoga studio and new fitness centres are offering new and inventive ways to manage our well-being.

Now we have local Facebook pages dedicated to providing us with classes such as: reiki, sound baths, mediation and yoga, all of which

make for a better and healthier future.

As we move into 2025, I'm sure our community will continue to adapt and change as it has for the last decade, and Just Beverley will continue to be the voice of the community. Here's to another 10 years of health and happiness.



Shane Cooper, Stuarts of Driffield, Lincoln Way, Beverley, HU17 8RH.



W H Halmshaw Ltd



FOLLOW THE DUCK!
See me on the back of our vans

#followtheduck
tweet us a pic when you spot the duck to @whhalmshawltd

A yellow cartoon duck logo with 'Halmshaw's' written on its side.

Our Hull and Beverley showrooms are open Monday to Friday 9am-5pm & Saturday 9am-1pm.

Our Hull and Beverley trade counters continue to open Monday to Friday 8am-5pm & Saturday 9am-1pm.

Your Local Bathroom Suppliers, Plumbing Merchants & Glass Specialists with Showrooms in Hull & Beverley.



The Showroom is constantly updated to reflect new designs.

W H Halmshaw Ltd, Inspirations Works, Annie Reed Road, Beverley, HU17 0LF.

T: 01482 867142 • www.halmshaws.co.uk

LEON CONTINUES TO AMAZE AND INSPIRE

Maintaining fitness in old age is crucial for physical health, mental well-being, and overall quality of life. Engaging in a pastime that incorporates physical activity, such as gardening, swimming, or dancing, offers an enjoyable way to stay active.

Beverley resident Leon Lurie an elderly gentleman 80+ in April 2023 took time out to fulfil an ambition of his to take the opportunity to excavate at the site, Vindolanda in the north of England, just South of Hadrian's Wall.



Leon became aware that excavations take place between April and September each year, so he decided he wanted to excavate on the site. He knew that places were limited at Vindolanda and highly sought after to excavate under expert supervision of the resident team of archaeologist, but this did not deter him.



Leon commented, "Late in 2022, I learnt I had secured a place to dig at Vindolanda, but my heart sank when I read, 'You need to demonstrate that you are physically able to carry out the required work'. Being 80+ years old, having not participating in any form of exercise for 40 years, I needed help and with my fitness. I sought the help of Beverley's Oliver Johnston who has a good reputation in personal fitness, helping people of all ages, so my fitness journey began".

Leon went on to fulfill his ambition to dig at Vindolanda and has since completed a number of digs at various sites along with returning to Vindolanda on a couple more occasions. Without doubt he is an inspiration, having continued

under the guidance of Oliver. Since those early days and through a thought out training programme, Leon now two years on inspires the kids '40+' to get involved in exercise.



Having lost 1 stone almost all of which is fat loss, he maintained a healthy BMI and continues with a healthy but not complicated diet (Leon does not cook), keeps things simple and maintains a regular regime, keeping him active.

Leon said, "Regular exercise helps improve mobility, balance, and strength, reducing the risk of falls and chronic illnesses like heart disease, arthritis, and osteoporosis. A chosen pastime also keeps the mind sharp, reducing stress, and combating loneliness, which are vital for emotional health at any age, particularly the elderly".

Oliver commented, "It is a pleasure working with Leon, he inspires others to get involved, he understands that a shared activity can encourage social interactions".

With a combination of fitness and a fulfilling hobby Leon highlights that exercise brings purpose and joy to everyday life, countering the limitations often associated with aging. By staying active through a beloved pastime, older adults can nurture both body and mind, promoting longevity and a happier, healthier life.

Leon finished by saying, "The more you do the less pain you feel"!

SSAFA - RENEWED COMMITMENT AND PURPOSE

January 2025, another New Year, a time of renewed commitment and purpose for SSAFA, the Armed Forces charity. It marks an opportunity to reflect on past achievements and refocus efforts on supporting the military community.

SSAFA for over 135 years has provided vital assistance to serving personnel, veterans, and their families, and the New Year inspires continued dedication to this mission.



Michael Menzies Baird commented, "Each year brings unique challenges for those in the Armed Forces, from transitioning to civilian life to coping with physical or mental health struggles. SSAFA's support ensures no one in the military community faces these difficulties alone".

SSAFA are there whether it's through financial assistance, housing solutions, or emotional support, the charity provides tailored help to meet individual needs.

For SSAFA, the New Year signifies a fresh start to reaffirm its promise of care, compassion, and connection. It's a chance to reach even more people, ensuring they feel valued and supported throughout 2025.

SSAFA needs your help. Support them if you are able.

Tel: **01964 552 837**
Email: eyorks.branch@ssafa.org.uk
Website: ssafa.org.uk

ssafa | the
Armed Forces
charity

2025 - can you help make a difference?

Your Veterans Need You!

SSAFA are currently looking for volunteers to fill the following positions:

- Administration Assistant
- Branch Fundraiser or Coordinator
- Branch Volunteering Coordinator
- Caseworkers
- Divisional Secretarial Support
- Mentors
- Recruitment Coordinators
- Treasurer Support

SSAFA urgently need a Branch Chair, Branch Secretary, admin support and caseworkers.

The Branch Secretary serves as key figures in supporting those who have served their country, ensuring they receive the assistance and resources when in need after protecting our country.

It's a role that requires dedication, compassion, and a commitment to serving others, offering immense personal satisfaction and the opportunity to positively impact the community.



If you think you can help, please get in touch:

Tel: 01964 552 837

Email: eyorks.branch@ssafa.org.uk

Website: ssafa.org.uk

Telephone: 01482 869111
sales@rosesofbeverley.karoo.co.uk



The Kitchen Factory, The Courtyard,
Tokenspire Business Park, Beverley
HU17 0TB

Monday to Friday 9am - 5pm | Saturday 9am - 1pm

Roses Kitchens grown in Beverley for over 20 years



I would love a



kitchen



Wishing You a Happy, Healthy 2025

Please call 01482 869111 to book a viewing

MANY MORE OF OUR CUSTOMERS KITCHENS ON OUR WEBSITE
5 STAR RATED OVER 69 GOOGLE REVIEWS ★★★★★

Visit www.roseskitchens.com
to see our customers kitchens and read what they have to say about us

Telephone: 01482 869111



FOX MOBILITY CELEBRATES 10 YEARS OF SERVICE

Fox Mobility are celebrating 10 years of supplying mobility aids from their outlet in Walkergate, Beverley.

Ten years of excellent service a milestone worth honoring, reflecting a decade of dedicated service to enhancing the independence and quality of life for countless individuals.

Over the decade Paul and Anne have made the commitment to providing reliable, innovative, and high-quality mobility solutions that have encouraged customers to maintain their freedom, dignity, and confidence.



From walking aids and wheelchairs to advanced scooters and home adaptations, every product has been chosen with care, addressing the unique needs of every individual.

Paul and Anne commented, "We are looking ahead, the focus remains on continuing to make a positive impact, supporting communities, and helping people live fuller, more independent lives for many years to come. We wish everyone a Happy Healthy 2025".

Fox Mobility, for all your mobility needs, advice and help.
 110-112 Walkergate, Beverley, East Yorkshire, HU17 9BT.
 Tel: 01482 887799.
 Email: info@fox-mobility.co.uk
 Website: www.fox-mobility.co.uk

We wish everyone a Happy New Year

Burgess Ice Cream Ltd.
Est. 1924

Burgess's legendary dairy ice cream has been produced almost the same way since starting back 100 years ago in 1924.

Our passionate team pride themselves in producing the best quality dairy ice cream the traditional way, using only the best ingredients available. We manufacture and sell a wide range of ice cream flavours, sorbets as well as vegan ice cream. These are available in 5 litre Scooping Trays, 500ml Take Home Tubs & 125ml Spoon In The Lid eat now pots.

In addition to our range we now produce a "Dog Ice Cream" for our K9 friends in a handy 115ml pot.

And all delivered from our premises to our stockists in our own vehicles so you get your ice cream when you need it!

If you would like to be a stockist of Burgess Ice Cream we would love to hear from you to discuss further how we can work with your business.

Please call us on 01430 872894 or email: sales@burgessicecream.co.uk or check our website

HAPPY NEW YEAR
from

FOXMOBILITY.

Tel: 01482 887799
Email: info@fox-mobility.co.uk
110-112 Walkergate, Beverley, East Yorkshire HU17 9BT

- **Stairlifts**
- **Riser Recliner Chairs**
- **Walking Aids**
- **Power Chairs**
- **Scooters and Accessories**
- **Servicing and Repairs for your Mobility Equipment**

Need advice about mobility equipment? We're here to help!

TRANSFORM YOUR HOME WITH BEVERLEY'S HANDYMAN

The New Year is the perfect time to make the most of a handyman's expertise to transform your home. Ian, a skilled handyman, can tackle a wide variety of jobs, saving you time and effort while delivering professional results.

Ian looks forward to refreshing tired interiors repairing fixtures or installing shelving, their versatility can breathe new life into your living spaces.



Ian said, "Start the year by creating a list of tasks that need attention. Small repairs, such as fixing squeaky doors or patching up drywall, can instantly improve your home's comfort and functionality. For bigger projects, like assembling furniture, updating lighting fixtures, or even laying new flooring, I can provide the expertise to get it done efficiently".

If you are looking to start on some upgrades, remember they not only enhance your home's aesthetic appeal but also its value. With Ian the handyman's help, you can set the tone for a productive, refreshed, and well-maintained home all year round.



Testimonial:

'Since we moved to Beverley earlier this year Ian has completed several jobs for us. The most recent work in our kitchen adding drawers, shelves and pull-out corner shelving in the cupboards was all done to a high standard. He also installed open shelving underneath the kitchen counter top which has really exceeded our expectations. His attention to detail has meant that the shelves look like they have always been there. Ian is reliable, has good ideas and experience to ensure a job is done well.' Gill.



You can contact Ian on:

Mobile: 07970 332373,

Email: ianharrison68@icloud.com

Website: www.ian-harrison.com

Wishing everyone a Happy, Healthy 2025.

Ian

HARRISON HANDYMAN

For all your jobs around the home

- *Painting, Interior & Exterior*
- *Mirror & Shelf Installation*
- *Joinery*
- *Flat Pack Assembly*
- *Picture Hanging*
- *.. and so much more*

07970 332373
ianharrison68@icloud.com
www.ian-harrison.com

BEHIND THE SCENES AT BEVERLEY WESTWOOD PARKRUN

Beverley Westwood parkrun launched 5 years ago and really does put the community in community spirit. Bringing together runners, walkers, and volunteers from across the town of Beverley, and even further afield, BWp is the place to be on a Saturday morning.

Picture the scene, you have completed your parkrun, had your barcode scanned, been to the Windmill for breakfast, and then carried on with the rest of your Saturday. Later in the day you get an email or text with your result and/or your volunteer thank you. But where does that information come from? Who processes the details?

The volunteer week starts on a Monday. We email all BWp runners and volunteers detailing what roles still need filling for the following Saturday. We create an event listing on our private volunteers Facebook group and we start the process of filling the roster. The parkrun volunteer system is really good, when you add in a volunteer it tells you what they have done before and if they have volunteered at your parkrun.



As I have done the volunteer co-ordinator role so many times, I am very familiar with our regular volunteers but it is useful information for me when tourists volunteer with us or we have new folks to the area. We often put call outs for volunteers on our social channels and we are lucky so many shares the posts, including our very own Just Beverley family.

On Fridays we allocate all the marshals to their positions and then the rosters are printed ready for Saturday morning. All the kit is gathered together, it is normally stored at Kay's house, she ensures the radios are charged and all the high vis is clean and ready to be used.

After the event the volunteering doesn't stop. We head to the Windmill, for breakfast, and the run director for the day will process all the results, sometimes asking for help if there have been any incidents or problems with scanning or timing. More volunteers will sort all the tokens into order, ready for next week.

On Saturday afternoons you will often find Shaun processing his photos, or it could be Julian from this fine publication! Once they process



their photos, they will email them over and we create a folder on our Facebook page where the photos are added. Often, we get more photos in from marshals, runners, and other volunteers too.

Lastly, we have the run report. This is put together each week by someone different. They will put it together at home, detailing their thoughts about the event, the milestones achieved by our attendees and anything else they like. They email that in, we add it to the website and include some of the photos that had been submitted earlier.

Behind the scenes at BWp happens all week, it is not just a Saturday thing. For me, I love doing the volunteer co-ordinator role, but do always take Sunday off!

Louise Barrett.



19 Highgate, Beverley HU17 0DN
Tel: 01482 880871
www.monkswalkinn.com




A HAPPY NEW YEAR TO ALL OUR CUSTOMERS

Best Wishes for 2025

Enjoy some New Year cheer around our real fire



- GOOD BEER •
- GOOD COMPANY •
- GOOD CONVERSATION •






WE LOOK FORWARD TO SERVING YOU!

RM JOINERY BUILDING FOR THE FUTURE

Richard Mackay, started RM joinery in July 2008. Rich said, "Building a joinery business over 16 years has been an immensely rewarding journey, transforming a dream into a tangible success. Starting with just a van, a passion for craftsmanship, every project was an opportunity to learn, grow, and refine my skills".

Beverley based RM Joinery, built its reputation by providing a full domestic joinery service hanging doors, fencing, decking, fitting kitchens and bedrooms whilst working out of a fully equipped van.

As the business matured, it transitioned from a humble setup to a fully-fledged workshop in August 2019, taking the bold step to manufacture their own furniture. The evolution brought challenges, investing in equipment, managing a growing team, and perfecting workflows.

Rich added, "These hurdles only deepened the sense of accomplishment. Enjoying watching raw materials transform into crafted pieces in

a streamlined workshop." In 2020 RM Joinery became a limited company, (RM Joinery Kitchens and Bedrooms Ltd), with increased workload, diversifying their offering.

To support the growth following continued expansion, Rich approached Jamie to take on the position of Technical Manager to assist with design and workflow. Jamie previously worked with Val Mysko at Dreamer Bedrooms and Kitchens for 3 years until Dreamer closed. Val Mysko added, "I am pleased that Rich and Jamie are looking after a lot of our Dreamer customers."

Rich commented, "Jamie brought with him a wealth of knowledge and design skills, the ideal attributes to assist in taking RM Joinery forward and help organise the manufacturing process". In July 2021 RM Joinery took possession of two more units and within the next year turned a unit



into a showroom/design studio to enhance the customer experience.

RM Joinery now employs six staff and multiple sub contractors, they manufacture and install bespoke kitchens, bedrooms, bathrooms, home studies, home bars whilst maintaining the core passion for craftsmanship. Rich finished saying, "The greatest pleasure lies in creating a legacy of trust, reliability, and excellence. Seeing employees thrive and clients cherish the results of hard work makes the journey fulfilling".



RM JOINERY KITCHENS & BEDROOMS

QUALITY WORKMANSHIP FOR ALL YOUR FITTED FURNITURE NEEDS



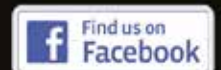
Wishing you a Healthy and Prosperous New Year

KITCHENS • BEDROOMS • HOME STUDIES • BATHROOMS

Visit Our Showroom: Hull Bridge Road, Tickton HU17 9RT

FREE HOME
VISITS & DESIGN
SERVICE

01482 867389



rm.joinery@yahoo.co.uk | www.rmjoinerykitchens.co.uk

JAMES ACONLEY BRINGS PAULINE QUIRKE ACADEMY BACK TO BEVERLEY

James Aconley, a seasoned performer and dedicated educator, is bringing the renowned Pauline Quirke Academy (PQA) back to Beverley in February 2025.

This exciting development promises to provide young people in the region with access to high-quality performing arts training.

James Aconley, with a wealth of experience in the entertainment industry, will lead the new academy, ensuring a vibrant and supportive learning environment.

The academy will offer a comprehensive curriculum covering acting, singing, dancing, and filmmaking.

Students will have the opportunity to develop their skills, build confidence, and explore their creativity in a fun and engaging setting.

"I am thrilled to be bringing PQA back to Beverley," says James.

"I believe in the power of the performing arts to nurture talent, build self-esteem, and provide invaluable life skills. I am committed

to creating a welcoming and inclusive academy where every child can shine. It's been a number of years since we've had a PQA in Beverley, and the demand has just got so high from local families that we've decided to return at last!", James says.

PQA Beverley will emphasise a holistic approach to education, focusing not only on technical skills but also on teamwork, communication, and personal development.

Young people will have the opportunity to participate in regular performances, showcasing their talents and gaining valuable stage experience.

The academy will offer classes for children and teens of all ages and abilities.

Free sessions are available at the academy, starting

with a launch day on 1st February, allowing prospective students and their families to learn more about the PQA Beverley experience.

With James Aconley at the helm, PQA Beverley is set to become a thriving hub for young performers in the region, providing a valuable and enriching experience for years to come.



WHERE THEY FIND THEIR AMAZING SELF. CLASSES FOR STAGE AND SCREEN. AGES 4-18.

Helping children and young people discover their amazing self is at the core of what we do. Our classes cover a wide range of performing arts, taught by professionals in a safe and inclusive space where children can learn and thrive.

With project-led, student-created sessions in acting, drama, filmmaking, and performing, students explore, discover, and showcase their talents. All wrapped up in a simple payment plan and a free full session available for everyone.



PQA BEVERLEY

East Riding College, HU17 0GH
pqacademy.com/academies/beverley

COME AND ENJOY A FREE SESSION!

**PAULINE
QUIRKE
ACADEMY**
OF PERFORMING ARTS
BE YOURSELF BE AMAZING

NEW YEAR WORDSEARCH

H G P H Q D R L J E R G R Z Z
 J T T K N V A F S Q Z S V A F
 F E E C E G E T N T Q F A N L
 R P R T E U Y M O M Z R H T Q
 H J U Q G L W Z I F M I Z I H
 R B T B L M E F T A S E F C O
 D E U H A H N B A E I N L I U
 U A F J A N U A R Y M D O P W
 L H Q L A L P M O A I S N A O
 Z N S A E E L M B Y T H E T M
 K H M R W C Y B A V P I S I W
 F O B C X L T A L X O P O O C
 U O P J D N A I L E C S A N X
 M C U J T W M P O C A O O H S
 T Q G E A E Q Y C N J G W S P

ANTICIPATION
 CELEBRATIONS
 COLLABORATIONS
 FRIENDSHIPS
 FUTURE

HAPPY
 JANUARY
 NEWYEAR
 OPTIMISM
 REFLECTION

How to keep your New Year's resolutions

- Set realistic goals:** Set goals that are achievable.
- Make a plan:** Break your goals down into manageable steps.
- Track your progress:** Reward yourself on successes.
- Find support:** Embrace people who support your goals.
- Look after yourself:** Exercise and recover to recharge your energy and motivation.
- Get enough sleep:** Establish a bedtime routine to help you get quality sleep.
- Learn new skills:** Consider attending personal growth workshops.
- Take a digital detox:** Step back and engage with nature.

On Reflection where will you find the Ducks?
 Answer on Page 34.



WHAT IS IT?

Can you work out what this obscure image is?
 Answer on Page 38.



NEW YEAR COMEDY CORNER

What's for breakfast on really cold January days?
 Snowflakes.
 Knock, knock. Who's there? Dishes. Dishes who?
 Dish is the coldest January ever.
 What is at the end of January?
 Y.

QUOTE FOR THE MONTH
 Words are powerful,
 use them wisely.

DREAM DOORS®
 NEW LIFE FOR OLD KITCHENS

Proud members of
Checkatrade.com 9.8/10
 Where reputation matters

UP TO 50% LESS THAN A NEW FITTED KITCHEN

by simply replacing the doors and worktops

4a Belprin Park, Swinemoor Lane, Beverley HU17 0LN

Call us now for a free estimate :



01482 861653



dreamdoors.co.uk

A CELEBRATION OF 10 YEARS AS A PERSONAL TRAVEL COUNSELLOR

As we start 2025 with new ambitions and goals it is also rather nice to reflect on the positives of the previous year and the lessons we can learn too.

At the end of 2024 I was able to congratulate myself on having completed ten years of running my own business as a personal Travel Counsellor. It has been hard work interspersed with some incredibly fun moments and many fabulous destinations visited too.

It is interesting to look back on how in some ways things are very different, and yet in other aspects it is very much the same. It is also very interesting to see how travel trends change too and new places are becoming more popular than ever before.

As a travel counsellor I work from my home office based in Beverley and do not have a retail presence in our town, however despite this I am able to find plenty of customers. As I had worked in the industry for just over 20 years at Thomas Cook I had a strong client base that chose to follow me and they have then recommended me to others so it is rather lovely to look at my client base and see how it has grown and whilst the majority are based in the East Yorkshire area I do have some in Scotland, Warwickshire, and Lancashire too.

When I look back to how travel was promoted when I started work, the process was very much a case of clients selecting their preferred holiday from the brochure and more as an order taker we booked the holiday and the concept of fluid pricing did not exist. You had a set date that all suppliers went on sale and the clients would form an orderly queue to await their booking to be processed.

Any more complex multi-centre itineraries were often done by phone to specialist suppliers. Nobody emailed. You never received enquiries out of office hours. Cruises were more of a very special occasion holiday and usually for the more mature clients and rarely families



and not young independent adults. Now my business is promoted primarily through personal recommendations, however also through the support of this fabulous publication, the Beverley Referral Business Network, and Facebook.

As an independent tour operator I am now able to build bespoke itineraries - selecting airlines, hotels, transfers, trains, cruises, experiences all tailored to fit the clients needs and budget. It is this part of my job that I enjoy the most as it is building up an itinerary to suit each client's interests and style and it gives a huge sense of satisfaction to put together a wonderful experience that I am confident that they will love.

I am confident because I take the time to get to know my clients well and learn what would suit them and also because with my huge experience in the industry I am able to know which routings/hotels/experiences will work best for each client.

I also work a lot with many niche suppliers and make bookings through these suppliers as sometimes these are more suitable for the client. I am completely independent and my recommendations are always based on what is best for the client.



Areas of my business that has grown over the last ten years is an increase in adventure travel/ small or larger group escorted tours with authentic experiences at the heart of the itinerary. I book these holidays for couples and also for solo travellers - however some of them are suitable for families too and would love the opportunity for this area to grow.

I thoroughly enjoyed an adventure to Vietnam last year which was arranged by Intrepid Travel - certainly the adventure of a lifetime and a destination and a tour operator that I can highly recommend. I also book a lot of Riviera Travel, Journey Latin America, G Adventures, Newmarket and Wendy Wu.

In terms of destinations over the last year Africa with various multi centres and safaris remains my biggest long haul area, however Japan has had a huge uplift and is very up and coming with several clients booked in for 2025. Far East & Australia are also popular.

Cruising is always a large part of my business particularly where you require a pre and/or post stay to the itinerary. With the advance of information technology all my clients have the opportunity to have the myTC app downloaded into their phone so at a touch of a button they look at their quotes and their bookings, see how many sleeps till their next holiday and what they are due to pay and when.



All their documentation can also be viewed, so those in favour of a non paper life and a high tech world, have their needs met. All my clients are still offered the paper ticket wallet with branded luggage labels if they prefer to have this instead or even as well as the app.

For me it is all about the client and however they want it to be is how I will operate. I still very much like to engage directly with clients as I find this is the best way for me to build a relationship with the client and therefore be better placed to know exactly which holiday will be perfect for them.

My daughters do tell me my job is easy as all I do is chat to people - I can assure you that navigating a travel business through a pandemic and repatriating clients was not easy at all - however whilst that was extreme times the point remains is that I personally am available to my clients for me to be able to manage their quotes/bookings and guide them through what is needed.

While the last ten years have seen changes in my industry in terms of technology the fact remains that whilst it is becoming a bit high tech the way I operate my business is very much a high touch environment and will happily meet clients in person to discuss their travel plans.



Either way it is a personal way in which your booking is managed and you are very much an individual and not just a number. I am certain that many more areas of the travel industry will change in the next ten years but what I am certain of is that my passion for exploring the globe will not be fading and I am very much looking forward to continuing to serve my lovely clients and hopefully meeting many new clients along the way too.

Amanda McConnell, Travel Counsellors.
Tel: 01482 770540
Email: amanda.mcconnell@travelcounsellors.com
Web: www.travelcounsellors.com/amanda.mcconnell

WILSONS WHEELS - ADY ON A HIGH

Ady, riding for the Wilsons Wheels Cyclocross team, did enough during the year to allow him to go on and compete in the World Masters Cyclocross Championships, held in Hamburg, finishing 13th and 2nd British, a remarkable achievement.

His performance speaks volumes about his dedication and the support he has with Wilsons Wheels. Cyclocross is one of the most demanding cycling disciplines, combining speed, technical skill, and endurance over rugged, muddy terrain. Competing at a world-class level requires countless hours of rigorous training, fine-tuning technique, and a deep mental commitment to push through physical and environmental challenges.



Ady commented, "I left everything out there, going into the red 185 bpm trying to get through slow traffic from row 7. I was sitting 25th at the end of the first lap. Just delighted and shattered".

Earning a top 15 finish in such a prestigious event not only highlights an individual's athletic prowess but also their ability to compete with the best in the world.

Nathan from Wilsons Wheels commented, "It reflects Ady's years of disciplined preparation and adaptability under pressure, traits that earn respect both on and off the course. This accomplishment is a testament to his perseverance, passion, and the relentless pursuit of excellence in a highly competitive and globally recognised sport".

With the excellence that is Wilsons Wheels, you know when you buy your bike or accessories from them you are in safe hands.

Pop in store
to see the new
2025 bike range

WILSONS WHEELS

T: 01482 882881

W: www.wilsonswheels.co.uk E: info@wilsonswheels.co.uk

WISHING EVERYONE A HAPPY CYCLING 2025

• Adult Bikes • Children's Bikes • Electric Bikes
 • Clothing for all cycling weather • Parts and accessories

89a Grovehill Road, Beverley, East Yorkshire HU17 0EJ

NOW OPEN: Monday - Saturday 9am - 5pm
 Sunday: CLOSED - Out riding our bikes

LIVE A HEALTHIER LIFESTYLE IN 2025

We are a small, holistic wellbeing studio based in Dunswell, offering a variety of fitness classes to suit everyone. We pride ourselves on being a friendly, welcoming and comforting environment for those wanting to improve their fitness levels and de-stress.

MONDAY	TUESDAY	WEDNESDAY	THURSDAY	FRIDAY	SATURDAY
Pilates 10:15 - 11AM	Adult-Only Swimming 11AM - 12PM	Sculpt & Burn 6:30 - 7:30PM	Pilates 10:15 - 11AM	Aqua Fit 11:45AM - 12:30PM	Vinyasa Yoga for Beginners 9:30 - 10:15AM
Strength & Mobility 6:30 - 7:15PM	Pilates 6 - 6:45PM		Yoga 7 - 7:45PM		
	Balance 6:55 - 7:40PM				

PRICES

£6 per class OR unlimited classes for £42 per month!

10 classes for £55 (NO EXPIRY)
20 classes for £100 (NO EXPIRY)

SPORTSABILITY

FITNESS & WELLBEING STUDIO

Scan here to book onto classes



WHAT'S ON IN BEVERLEY

Tell us about your event!

E-mail info@justbeverley.co.uk

Telephone **01482 679947**

For more events visit
justbeverley.co.uk/pages/news

Friday 3rd January - Thursday 6th February

Theatre Gallery: An exhibition of Mariia Moiseienko's art

East Riding Theatre. Mariia Moiseienko is originally from Ukraine. She is now based in Hull, as both an artist and painter, specialising in depictions of people, towns, churches and bridges.

Tuesday 14th & Tuesday 28th January

Singalong Memories

Walkington Methodist Church schoolroom on alternate Tuesdays afternoons 2pm to 3.45pm. We sing along to original recordings from the 1950s, 60s and 70s. Large, easy to read words are displayed on-screen. You don't need a great singing voice - just enthusiasm. Refreshments are included in the charge of £3 per session. Contact Val on 01482 865249 or Sue on 01482 882188.

Saturday 18th January

Edwina Hayes with Support from Emily Slade

East Riding Theatre. One of the finest female singer/songwriters this country has produced in years. Edwina brings together English folk, Americana and the rich Northern singer/songwriter tradition to create a sound that's truly her own. Doors Open 7.10pm. Show Starts 7.30pm. Ticket Price: £18.00 Standard.

Friday 24th January

Big Beverley Comedy Night

East Riding Theatre. Join us for the Big Beverley Comedy Night, featuring award-winning comedians! The show has earned an outstanding reputation and a loyal fanbase across the East Riding. As usual, you can expect a fantastic line-up of award-winning comedians. Doors Open 7.10pm. Show Starts 7.30pm. Ticket Price: £18.00 Standard.

Friday 31st January

Dr Feelgood

East Riding Theatre. Dr Feelgood are a gritty combo rooted in R&B that became a fixture of the '70s pub rock scene and an influence on the punk movement. Doors Open 7.10pm. Show Starts 7.30pm. Ticket Price: £27.00 Standard.

Saturday 8th February

Deep Six Blues

Deep Six Blues are following their UK Top 20 Blues album 'The Devil's Hand' with a string of intimate close up and personal shows in beautiful venues. Formed in 2022 by singer-songwriter Si Vix, a blues aficionado, he recruited members of the local jazz and blues scene to play and record what he calls the "Humber Delta Blues". Doors Open 7.10pm. Show Starts 7.30pm. Ticket Price:

£20.00 Standard.

Sunday 9th - Sunday 16th February

Stage4Beverley Winter Festival

The Stage4Beverley Festival will be hosted across six venues: East Riding Theatre, Parkway Cinema Theatre, Monks Walk Inn, Memorial Hall, Toll Gavel Church & Cafe Wild, bringing a celebration of music to the town to appeal to all tastes and ages.

Thursday 20th February

The Ultimate Bubble Show

Join Ray, International Bubbleologist and Guinness World Record Holder, and help him in his quest to complete the bubble game and make the ultimate bubble. Show Starts 2pm. Ticket Price: £14.00 Standard. £10 Concession (Under 16).

Friday 21st February

FUN! with Barbara Nice

Join ordinary housewife extraordinaire Barbara Nice for a laugh-out-loud joyful get-together as we reconnect with what makes life worth living. Doors Open 7.10pm. Show Starts 7.30pm. Ticket Price: £17.00 Standard.

** Half Year Special Offer **



BEVERLEY FILM SOCIETY
THE BEST OF WORLD CINEMA

BFS Membership half price only £7.50

Tickets: £3 per film for members

Our 2025 Programme

13 February

No Bears (2022)

Iranian | Drama

10 April

The Promised Land (2023)

Danish | Historical Drama

12 June

Broker (2022)

S.Korean | Comedy

13 March

Perfect Days (2023)

Japanese | Drama

8 May

Fallen Leaves (2023)

Finnish | Drama Romance

*All films shown at
Parkway Cinema*

Sign up in February and.... enjoy a
FREE bonus film on the 10th July

'Alcarràs' a Spanish family drama set in the
beautiful Catalanian countryside.

www.beverleyfilmsociety.org.uk

WHAT IS IT ANSWER

It was a tape dispenser!



FIND THE DUCKS ANSWER

You should have found those ducks
on the Halmshaw advert on Page 27.

ERT - AT THE HUB OF THE COMMUNITY

A good theatre is a vital cultural cornerstone in any town, ert has been shaping its identity over the course of a decade, recently celebrating 10 years with A Christmas Carol.

Over the years ert has provided a platform for creativity, storytelling, and community engagement. ert provides a good mix and diverse range of entertainment. Sasha, the Theatre manager commented, "We aim to provide

cultural enrichment, offering our audiences the opportunity to experience diverse performances, from classic plays to innovative contemporary works.

"Over ten years, we have also nurtured local talent, encouraging aspiring actors, playwrights, and directors to hone their skills".

It was a dream for a number of local people to be able to take on the venue and transform it into a theatre which in time has become a hub for social interaction, drawing people together for shared experiences that promote understanding and empathy.

Economically, it stimulates local businesses, creating jobs and attracting visitors who spend on dining, shopping, and lodging.

With strong support from local volunteers, businesses and core attendees of productions, ert is a thriving theatre that boosts civic pride, enhancing the town's reputation as a cultural destination.

Sasha mentioned, "Over the



last decade we have managed to strengthen community bonds, preserve artistic heritage, and ensure the town evolves into a vibrant, dynamic place to live, work and visit".

If you have a few hours spare and wish to get involved ert would like to hear from you.



SAFETY DRIVING TIPS FOR WINTER WEATHER CONDITIONS

As a representative from your local road safety charity, Hull and East Riding Advanced Motorists, I have been asked to write a series of articles covering different aspects of Advanced Driving.

We are all volunteers and our group is currently celebrating our Diamond Jubilee Anniversary 1964-2024. 60 years of coaching Advanced Driving, contributing to making our local roads safer. We run a range of courses and our contact details are at the bottom of this article. Please get in touch.

Winter brings with it difficult driving conditions, now is a good time to remind everyone how to adapt their driving when the temperature drops below zero.

When we expect freezing conditions, we tend to get weather warnings from the Met Office, however you should always take extra care when travelling in Winter.

Triple your stopping distance

Approach every junction planning to stop well before the stop or give way line (it can take up to



ten times as long to stop according to Highway Code advice).

Every steering, acceleration or braking input should be as smooth and gentle as possible, and by selecting 2nd gear when you pull away in icy conditions should mean you have less torque that will help prevent wheels spinning. Remember ABS can be ineffective in icy conditions, changing down the gearbox sequentially can be an effective way to slow, but be careful about selecting a lower gear too soon as this may cause the wheels to lock.

Keep your car clean

Salt will often make the windscreen, headlights, number plate and rear parts of your car very dirty. Cars without headlamp washers, for example, will lose an estimated 40% of luminosity and possibly all their focus in about 20 miles on a damp, gritted motorway. When travelling long distances it is advised that you stop regularly at service stations to clean your windscreen and headlights and rear lights with a clean cloth to allow you to see and be seen.

Avoid unnecessary overtaking

When driving on a busy road avoid overtaking a gritting lorry as the road ahead may not be treated yet. If you have any doubt, don't risk it. And make sure to never overtake a snow plough in heavy snow conditions. If you see the gritting lorry stay well back from it and avoid getting sprayed with salt, remember the salt will take a while to work if the road is already icy as it relies on the salt getting into the ice, at really extreme temperatures this may not help.

Drive at a steady pace

While roads may be gritted to give you better traction, some areas may not be completely

treated which can leave ice patches exposed. You should therefore drive at a steady pace, ensuring the safety of you and your passengers. It's also worth remembering to watch out for water running across the carriageway as this can wash away salt or freeze over in those extreme minus temperatures.

Watch out in the Winter sun

Just because the Winter sun is out does not mean the roads might not be icy. Microclimates of icy patches will linger in areas such as bridges and exposed sections, where the sun has not yet reached. Be wary of vision being affected by the low sun, not just yours but other road users.

Check your tyre tread

Keep the tread on your tyres above 2mm (ideally 3mm), the more tread you have the more water they can cope with. Letting your tyres get down to the legal limit of 1.6mm is not recommended, and don't forget you can always consider winter tyres if you are in an area where they will benefit you. The following link will give good safety tips:

www.tyresafe.org/tyre-safety/

IN CONCLUSION:

"Preparation is the key to avoiding a dangerous situation whilst driving in snowy or icy conditions. Don't rely on the performance of your cars' systems to get you out of trouble - allow time, make sure you have good visibility all round and carry the right equipment. If conditions are extreme remember the best advice is not to travel."

CONTACT DETAILS:

To find out more, call Hull and East Riding Advanced Motorists on **07752 694394** or visit iamroadsmart.com/groups/heram

**STAGE 4
BEVERLEY**
*Winter
Festival*



Steve Knightley
Michael McGoldrick,
John McCusker & John Doyle
The Pasadena Roof Orchestra
Henry Normal & Nigel Planer
Carol Ann Duffy with John Sampson
Martyn Joseph
Juan Martín
Rob Heron & The Tea Pad Orchestra
The Northern Soultrain
Chris Sewart
East Riding Youth Jazz Collective
Music, Songs & Stories from Ukraine
Jill Roberts, Pete Bolton and Michael Nagasaka
Curtain Raiser, Horizon Stage and Late Night Clubs
 and more to be announced

Sun 9th to Sun 16th
FEBRUARY 2025



stage4beverley.com / chris.wade@adastra-music.co.uk / 07801 124264
box office: eastridingtheatre.co.uk / 01482 874050
beverley.parkwaycinemas.co.uk

